

# **GRC43m**

GLOBAL **RESPONSE** CUTTER



**WESTPORT**

SINCE 1964



**GRC43m**



## ADVANCED PROVEN SOLUTIONS

The Westport GRC43m (Global Response Cutter) affords military and government agencies a high quality executable program that will remain on schedule and perform as designed. Westport's business model and culture (Series built vessels) is the center of a highly controlled environment that leverages proven composite build processes, computer aided designs and precision tooling, resulting in an "off the shelf" vessel with extraordinary tolerances, durability and quality.

**MISSION: MARITIME DEFENSE**

LAT: N 47.140912 | LONG: W 124.683838



# GRC43m



## GLOBAL **RESPONSE** CUTTER INDUSTRY LEADER

Westport Shipyard Inc. was founded in 1964 and is a pioneer in the use of proven composite materials in the Marine Construction Industry. Westport has built and delivered over 100 vessels used in commercial applications worldwide; from high speed ferries to commercial fishing vessels and yachts. Westport is recognized as one of the most advanced and proven builders in the world, delivering its vessels on-time, on-budget, as promised.

## ADVANCED PROVEN ENGINEERING

GRC43m features a proven hull design perfectly suited for patrol duties. The hull is engineered for high performance, strength, and stability. GRC43m incorporates U.S. Coast Guard specifications and is classed ABS HSC  $\alpha$ AI  $\alpha$ AMS.

GRC43m has a 4,500 nm patrol range at 10 knots and a 32.8 knot flank speed. These qualities are the perfect balance of on-station endurance and high-speed intercept capability.

The pilothouse is designed with an unobstructed 360° field of vision for optimum situation awareness and is equipped for mission command and control. Electronics include state of the art navigation, search and communication equipment.

The stern ramp enhances mission effectiveness by allowing efficient RHIB deployment and recovery.

**GRC43m multi-mission solution.**

### **MISSION: RESCUE**

LAT: N 1.084562 | LONG: E 103.617554





## ADVANTAGE COMPOSITE

Composites are advanced materials, with proven characteristics applicable to patrol vessels used by defense and security organizations. The composite construction process, resilient material properties, and reduced lifetime maintenance of composite vessels provide distinct advantages when compared to steel or aluminum.

- Precision Molds (composite)—Deliver superior accuracy in tolerances and repeatable quality.
- High Strength-to-Weight Materials (composite)—Deliver exceptional structural integrity and resilience, FRP and carbon fiber meets ABS strength rules, while reducing weight. This affords higher speeds, longer range, and reduced fuel burn.
- Dampening Material (composite)—Offers superior noise and vibration reduction.
- Insulating Material (composite)—Delivers superior cooling and heating benefits.
- Stealth Material (composite)—Reduces heat, radar, acoustic, and magnetic signature.
- Low Maintenance Material (composite)—Does not rust or corrode, reducing life cycle costs.
- Anti-Fatigue Properties (composite)—Provides longer service time.

**MISSION: DRUG INTERDICTION**

LAT: N 19.454853 | LONG: W 95.932617



**MISSION: COASTAL SECURITY**

LAT: N 26.465328 | LONG: E 51.49292



GALLEY



OFFICER STATEROOMS



CREW BERTHS

## GLOBAL RESPONSE CUTTER 43m

### DIMENSIONS

Length Overall (Molded)..... 143'0" .... 43.60 m  
Length Waterline ..... 124'5" .... 37.96 m  
Beam (Molded)..... 26'0" ..... 7.93 m  
Draft (Full Load) ..... 6'11" ..... 2.11 m

### MAXIMUM SPEED

Full Load ..... 32.4 knots  
Half Load ..... 32.8 knots

### RANGE

10 knots ..... 4,500 nm  
14 knots ..... 3,000 nm  
Flank ..... 1,025 nm  
10% usable fuel remaining

### TANK CAPACITIES

Fuel ..... 13,535 USG... 51.27 m<sup>3</sup>  
Fresh Water ..... 1,500 USG..... 5.68 m<sup>3</sup>  
Gray Water ..... 1,100 USG..... 4.17 m<sup>3</sup>  
Black Water ..... 540 USG..... 2.05 m<sup>3</sup>

### DISPLACEMENT

Full Load ..... 475,000 lbs..... 215 MT  
Half Load ..... 433,000 lbs..... 196 MT  
Light Ship..... 333,000 lbs..... 151 MT

### OPERATION ENVIRONMENT:

Coastal and Offshore Missions

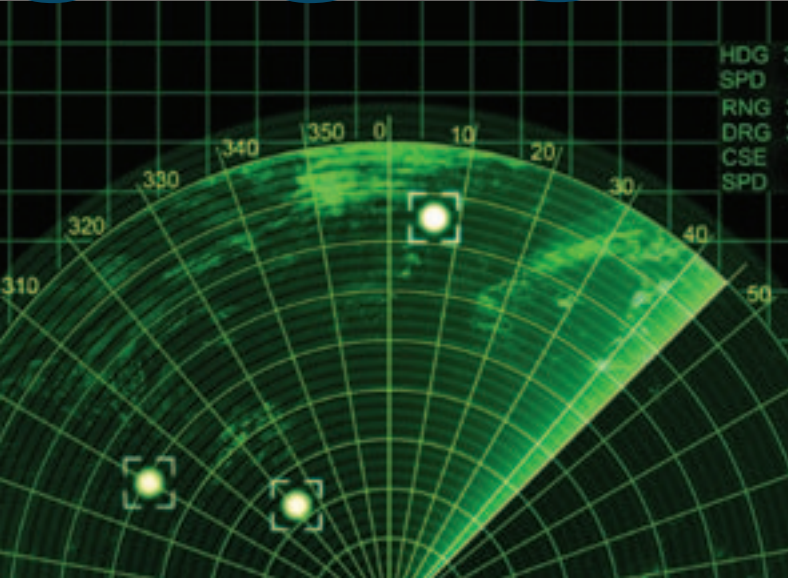
**MISSION ELECTRONICS:** Stabilized FLIR camera  
X and S Band Radars  
Communication Suite

**ACCOMMODATIONS:** Berthing for 24,  
Mess and Galley

**CLASSIFICATION:** ABS HSC ㊦AI ㊦AMS

This document is marketing information and does not include technical data as defined by U.S. International Traffic in Arms Regulations (ITAR), 22 CFR 120.10, and is therefore not export controlled.

# GRC43m



Please note dimensions, weights and capacities where shown approximate only. Speed, weight and other performance estimates if shown or discussed are estimates only and are not guaranteed. Project Director and Design Laser Advertising, Inc. Fort Lauderdale, FL 0411 | www.LaserAdvertising.com

## WESTPORT

SINCE 1964

WESTPORT COMMERCIAL DIVISION  
COMMERCIAL@WESTPORTSHIPYARD.COM  
WWW.WESTPORTSHIPYARD.COM/COMMERCIAL